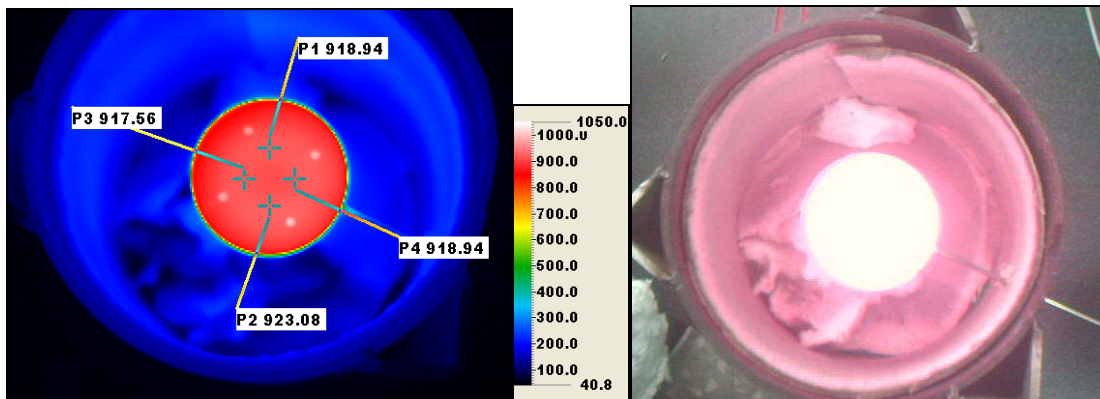


## 2" Chuck Heater

### SPECIFICATION

1. Maximum Temperature	925°C
2. Temperature Stability	±1.5%
3. Temperature Uniformity (center circle diameter)	±5°C
4. Maximum Voltage	60V
5. Maximum Current	12A
6. Heater Resistance	5Ω
7. Power Supply	AC/DC
8. Ramp Time to 750°C (in ATM)	<4 minutes
9. Ramp Time to 950°C (in ATM)	<13 minutes
10. Cool-Down Time (950°C to room temp., 1 ATM pressure)	<40 minutes
11. UHV Compatibility	YES
12. Electrical Biasing	YES



CT HEATERS or CHENG TAY HEATER & INSTRUMENT CO., LTD. reserves the right to bring any modifications to our products. We manufacture products according to drawings which serve as contractual documents. We are not responsible for damage resulting from inappropriate installation or use of our product.

ADDRESS: 16 Tung Yuan 2<sup>nd</sup> Road, Chung Li Industrial Park, Taoyuan County, Taiwan

TEL: -886-3-452-1328 FAX : -886-3-452-9539

<http://www.ctheaters.com> E-mail: [ct.heaters@msa.hinet.net](mailto:ct.heaters@msa.hinet.net) VAT #: 07105140